



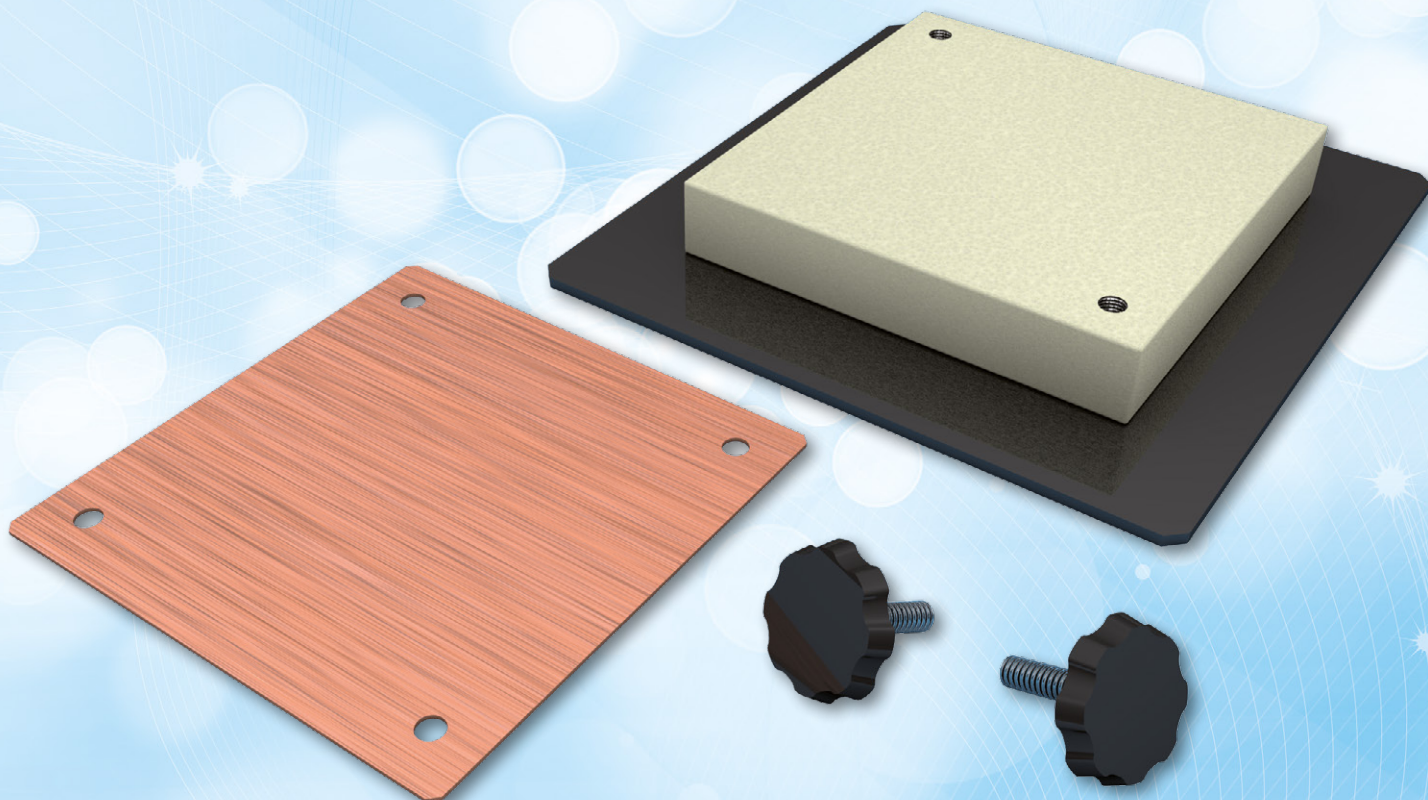
This product is available through:

JRT Associates

800-221-0111

**UNMATCHED
SOLUTIONS
FOR QUALITY
CONTROL**

Pro-RF Al 21



21 mm aluminum filter with insertion frame for mounting near the X-Ray tube.

Technical data (can be modified to customer specifications):

- filter dimensions: 120 x 120 x 21 mm
- mounting frame
- made of the purest aluminium
- optional 1 mm thick copper filter (that can be attached to the aluminium)
for tests at and above 100 kV (Pro-RF Cu 1)
- other sizes of filters upon request

Product features:

- Complies with:
 - IEC 61223-3-1
- CE certified
- the Manual provides detailed guidelines for carrying out each test,
results assessment and registration

